

## FOR LEASE RETAIL / OFFICE

**Price: \$17.50 / NNN**

14016 Manchester Rd • Manchester, MO 63011



- Three (3) Suites
- Last available vacancy: 1,794 SF
- Suitable for retail/office
- Great access
- Halfway between Highway 141 & I-270
- High traffic artery: 44,085 VPD
- Signage available

Demographics	1 Mile	3 Mile	5 Mile
Population	8,274	63,327	97,711
Households	3,434	25,348	37,760
Median HH Income	\$127,865	\$153,568	\$171,406

**For Information, Contact Agent:**

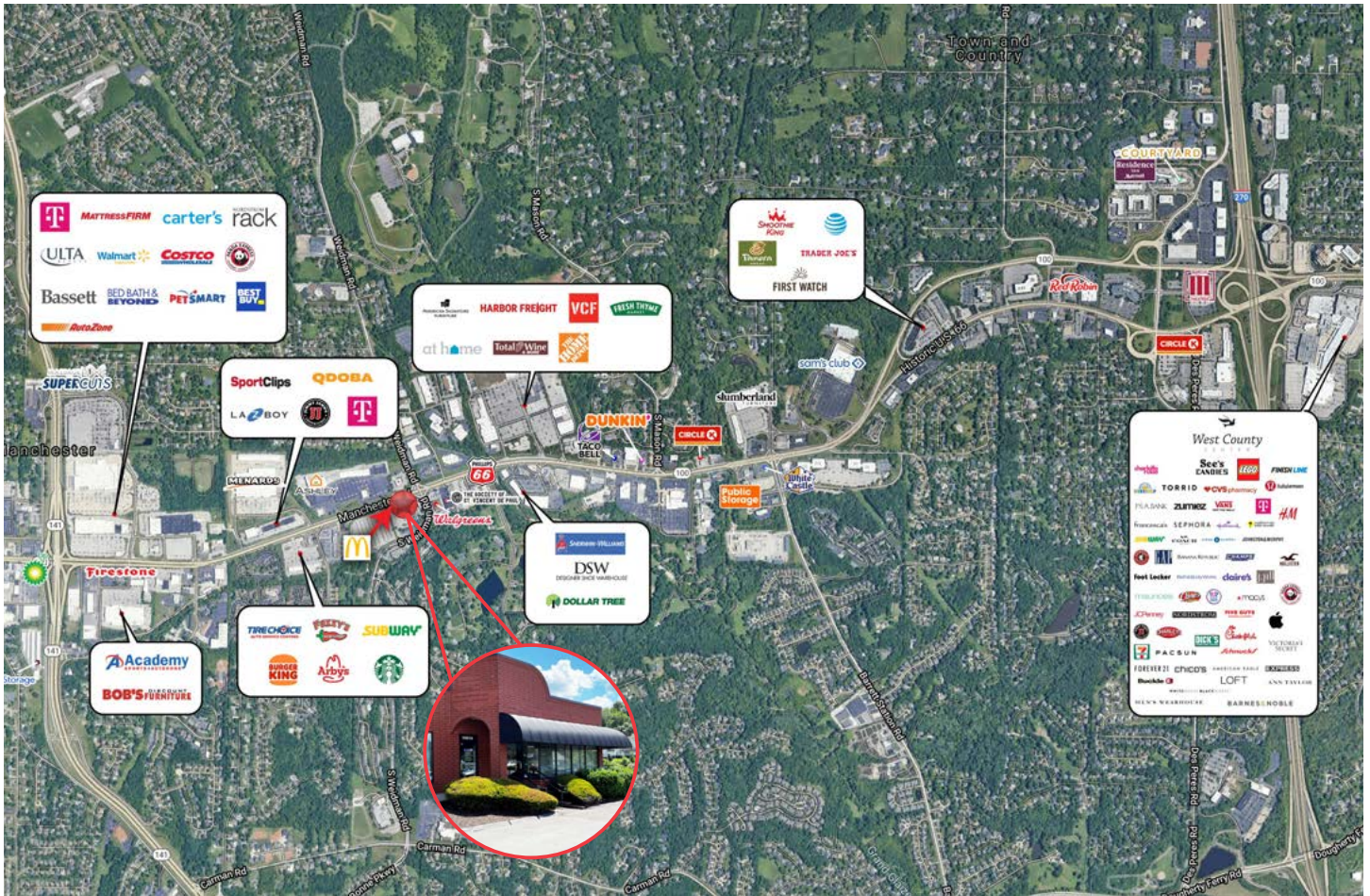
**Lily Seymour, MBA, CCIM**

Office: 314-820-1124

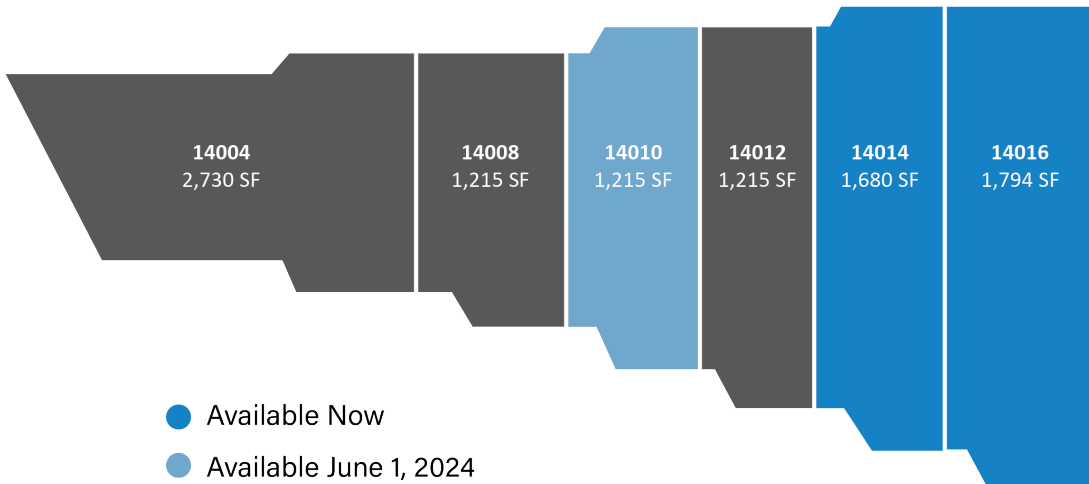
Cell: 314-277-5485

Seymour@realtyexchangeweb.com

Information contained herein has been obtained from the owner of the property or other sources. The Brokers do not guarantee the accuracy of this information. Sellers and Brokers make no representation as to the environmental or other conditions of the property and recommend that Purchaser(s) investigate fully.



The information contained herein is not warranted, although it has been obtained from the owner of the property or from other sources we deem reliable. It is subject to change without notice. Owner and broker make no representation as to the environmental condition of the property and recommend purchaser's/tenant's independent investigation.



\*Plan is Not to Scale