

## FOR LEASE

### THE CHOUTEAU CENTER

133 South 11th Street • St. Louis, MO 63102



- Office suites available / fully furnished and unfurnished
- Available for short term lease: 3,533 SF on Floor 2; 4,878 SF on Floor 3; 5,051 SF on Floor 5
- Closest office building to both the civil and the federal courts
- Adjacent to a parking structure
- Short blocks from Ballpark Village and Enterprise Center
- A stone's throw from Highway 64/40

**Price: Call Broker**

**For Information, Contact Agent:**

**Lily Seymour, MBA, CCIM**

Office: 314-820-1124

Cell: 314-277-5485

Seymour@realtyexchangeweb.com

## FOR LEASE

### THE CHOUTEAU CENTER

133 South 11th Street • St. Louis, MO 63102



*The information contained herein is not warranted, although it has been obtained from the owner of the property or from other sources we deem reliable. It is subject to change without notice. Owner and broker make no representation as to the environmental condition of the property and recommend purchaser's/tenant's independent investigation.*

**For Information, Contact Agent:**

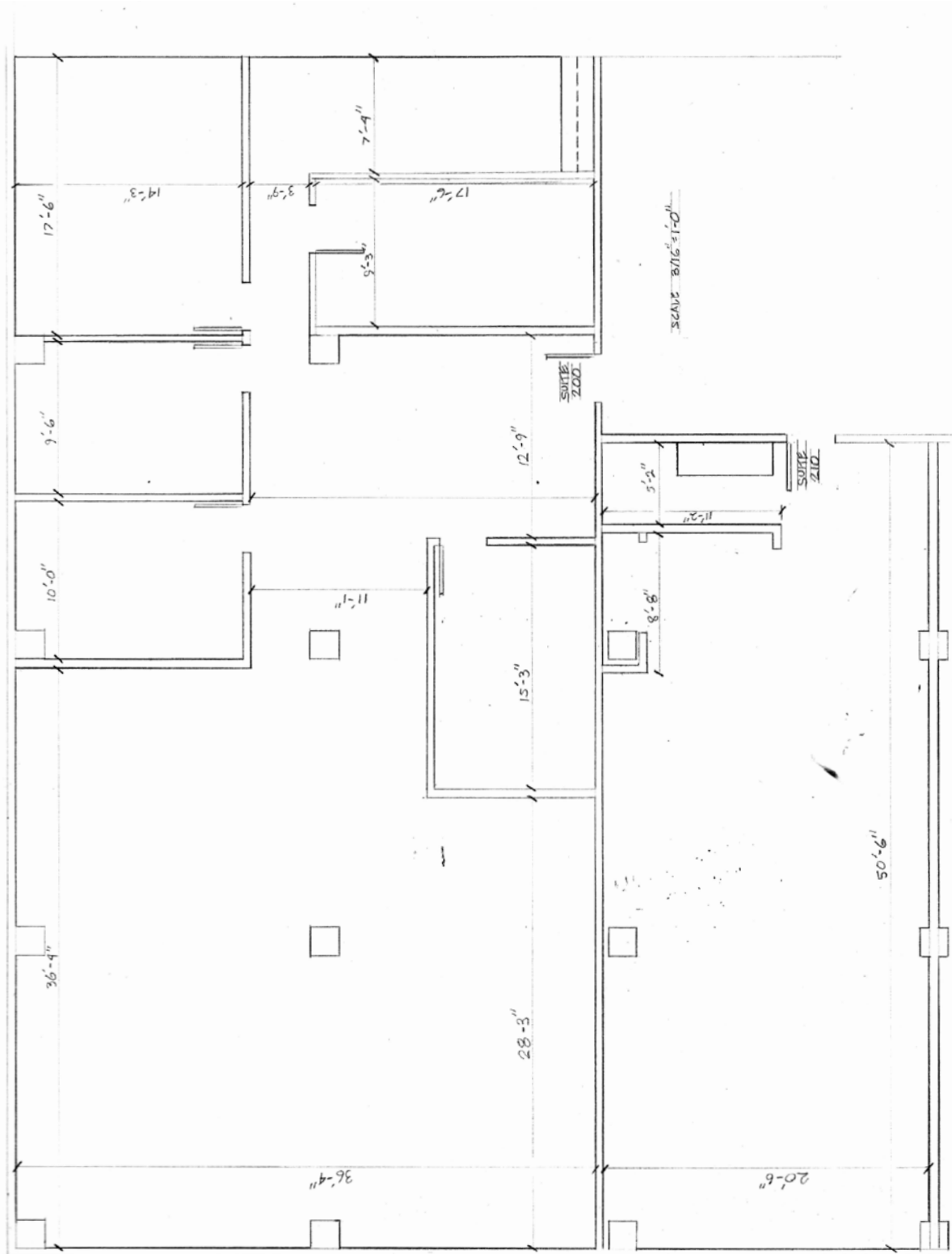
**Lily Seymour, MBA, CCIM**

Office: 314-820-1124

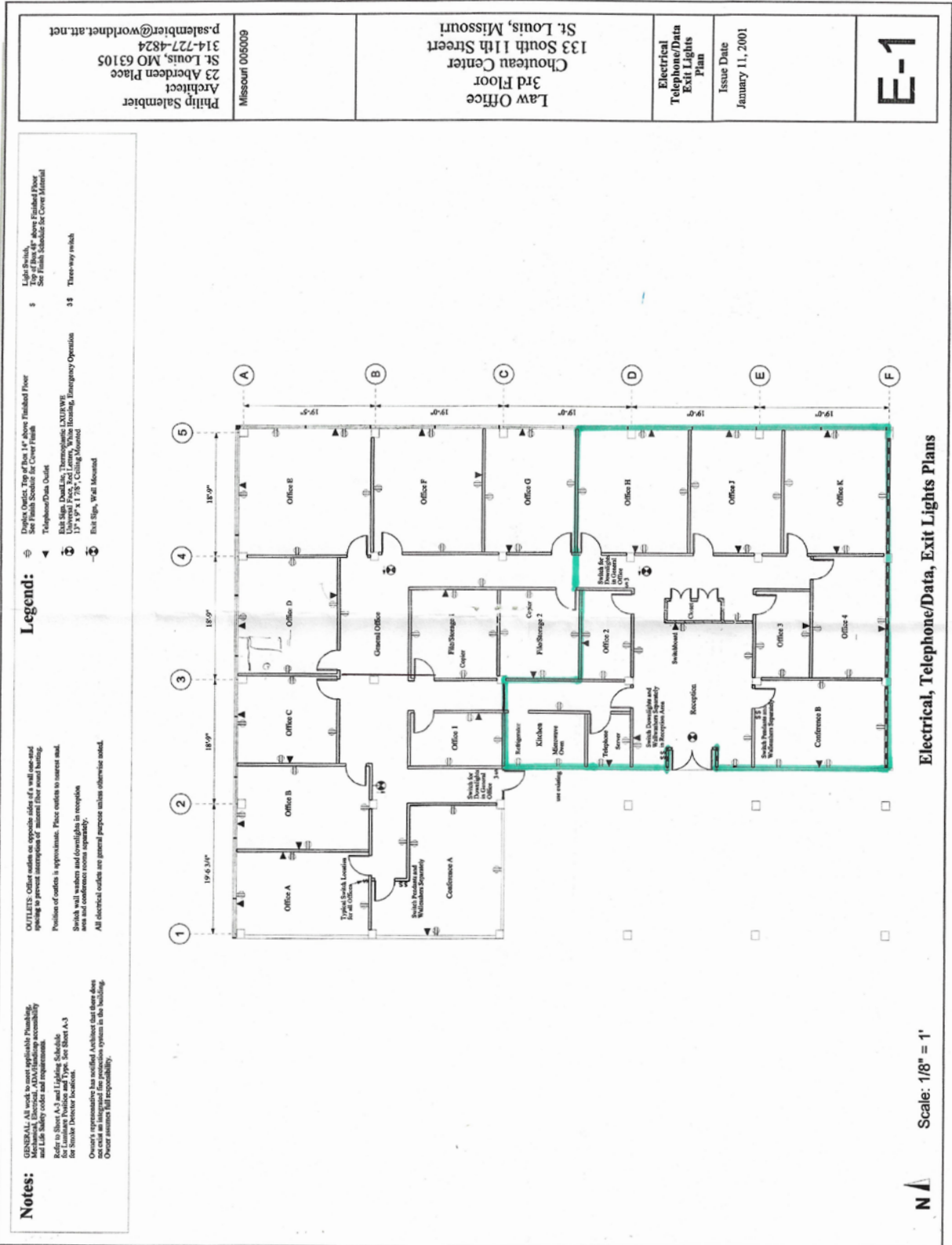
Cell: 314-277-5485

Seymour@realtyexchangeweb.com

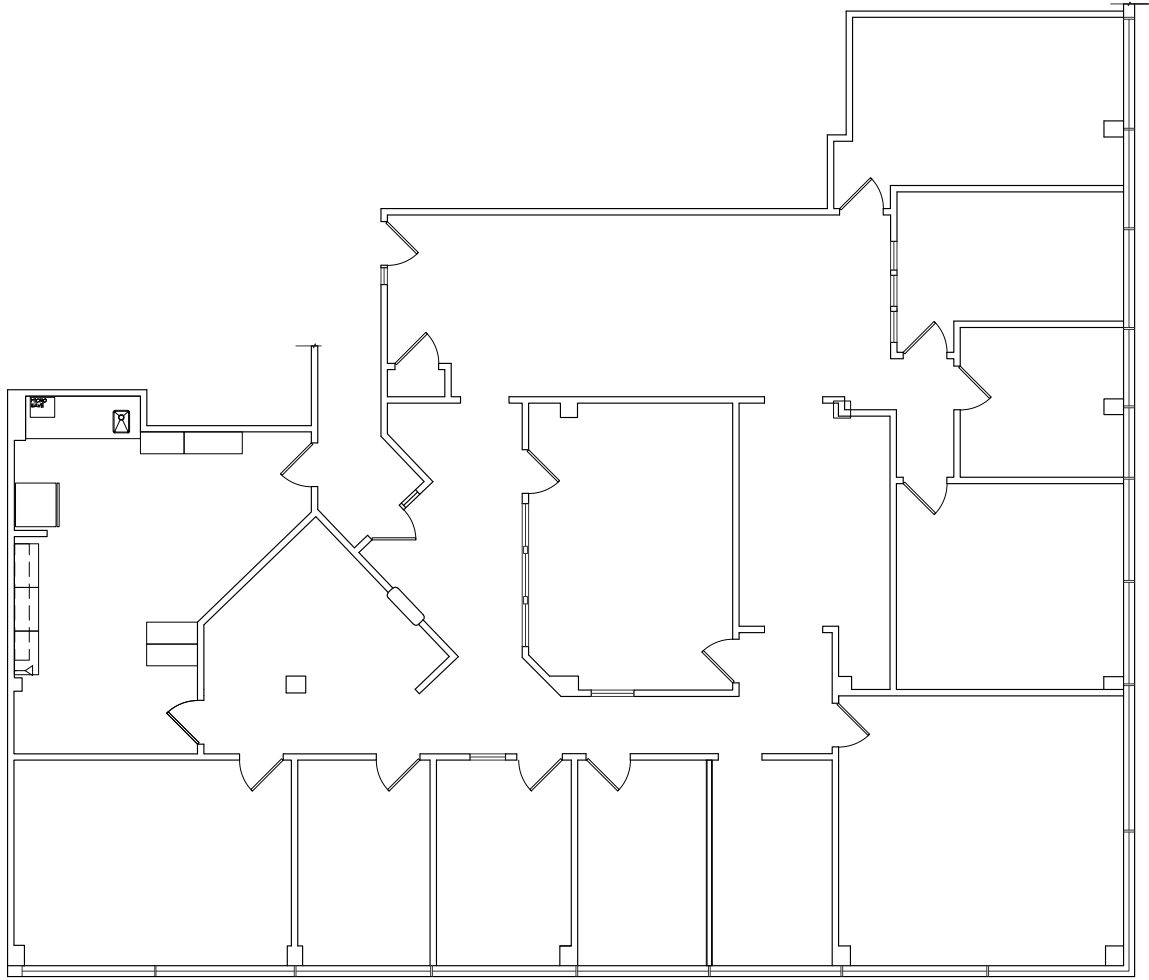
## 2ND FLOOR



## 3RD FLOOR



## 5TH FLOOR



FLOOR PLAN  
SCALE: 1/8" = 1'-0"